

**3/2 universal**

**Certification T6 (Tamb = -55°C to +50°C (-67°F to +122°F)) & T4 (Max ambient +90°C (+194°F)) or equipment must be used within 'T' class temp ranges shown.**

**EX II 2 GD - gas and dust environments.**

**Exd IIX - Exd protection, gas group IIC.**

**Atex certification SIRA 05ATEX1156, complies with ATEX directive 94/9/EC**

**IECEX certification IECEX SIR 05.0029**

**Safety integrity level SIL 3 or SIL 4 (SIL 4 in a redundant configuration only)**

**Protection IP66/X8, NEMA 4X**

**Technical features****Max. inlet pressure:**

0-12 bar (0-174 psi)

**Temperature ratings:**

**Media (min/max):** -55°C/90°C  
(-67°F/194°F)

**Ambient:** must be used within 'T'  
class temperature ranges shown

**Port size:** 1/2"

**Process connections:** NPT

Conduit / Signal Conns:  
M20 x 1.5mm ISO (F)

**Media:**

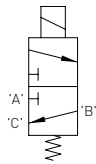
Customer to specify and confirm  
compatibility

**Materials**

Valve body & trim - 316L stainless  
steel  
O-Rings seats & seals - nitrile  
Paint finish - 316LSS coil housing  
- unpainted

**Electrical information**

<b>Voltage (nominal)</b>	24V DC	<b>Pull-in Voltage</b>	≥ 87.5% of nominal	
<b>Response Times (Typ)</b>	<b>Pull-in</b> < 80 MS	<b>Drop Out</b>	< 60 MS	<b>Drop-Out Voltage</b> 10 - 20% of nominal
<b>Coil Rating</b>	74 ohms	<b>Power Consumption</b>	7.8 watts	
<b>Voltage Protection</b>	Surge suppression diodes fitted as STD	<b>Coil Encapsulation</b>	Class H	
<b>Leak Performance</b>	Bubble tight at -50 °C. <30cc/m at -55 °C.	<b>Coil Duty Cycle</b>	100%	

**ICO3S 1/2" 3/2 12 BAR (174 PSI) AUTO****Flow rates:**

$C_v = 2.1$  USgpm for 1 psi  $\Delta p$

$K_v = 30.2$  l/min for 1 bar (15 psi)  $\Delta p$

**Weight:** 2.5 kg

**Operation:** Automatic

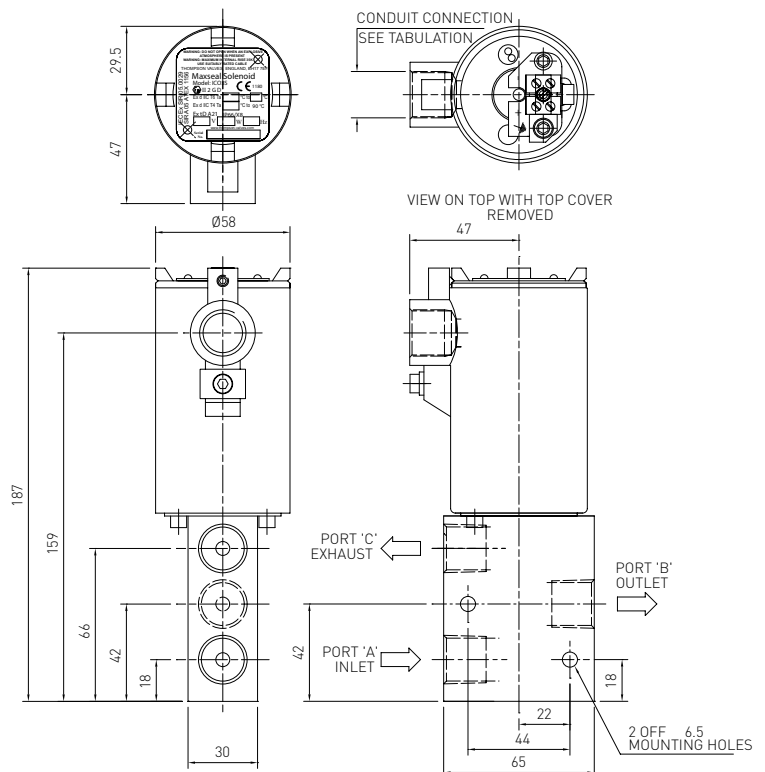
**Coil Rating:** 74 ohms

**Power Consumption:** 7.8 watts

**Ordering information:**

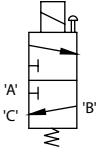
Quote: Y013AA3H1BS

Options: None



Profile and dimensions mm

**ICO3S 1/2" 3/2 12 BAR (174 PSI) PBMO**



**Flow rates:**

$C_v = 2.1$  USgpm for 1 psi  $\Delta p$   
 $K_v = 30.2$  l/min for 1 bar (15 psi)  $\Delta p$

**Weight:** 2.5 kg

**Operation:**

Push button manual override

**Coil Rating:** 74 ohms

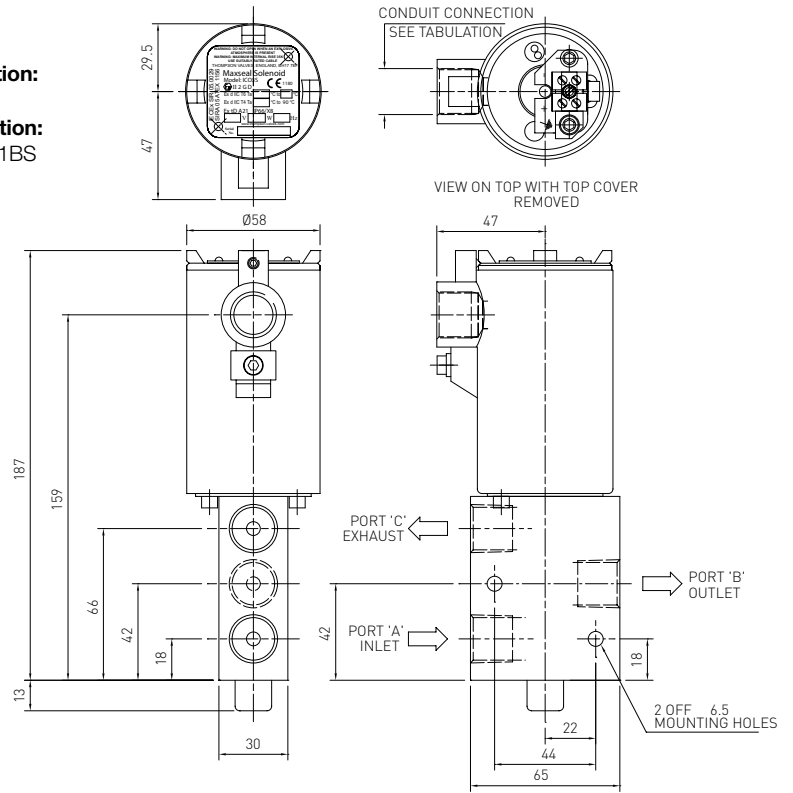
**Power Consumption:**

7.8 watts

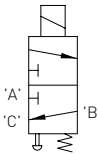
**Ordering information:**

Quote: Y013CA3H1BS

Options: None



**ICO3S 1/2" 3/2 12 BAR (174 PSI) PBMR**



**Process connections:**

NPT  
 2.8 kg

**Operation:**

Push button manual reset

**Coil Rating:** 190 ohms

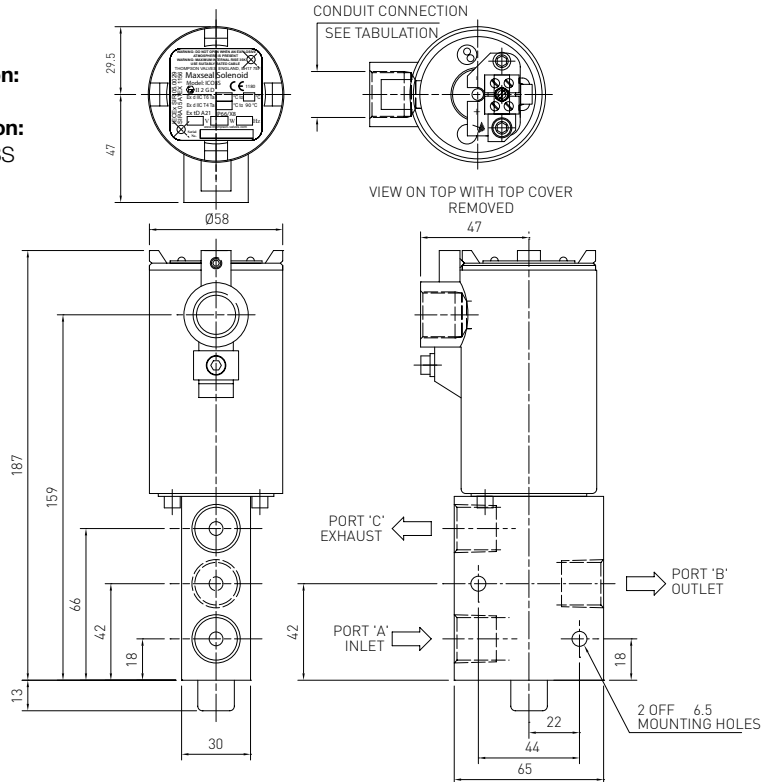
**Power Consumption:**

3 watts

**Ordering information:**

Quote: Y013PA3H1BS

Options: None



Profile and dimensions mm